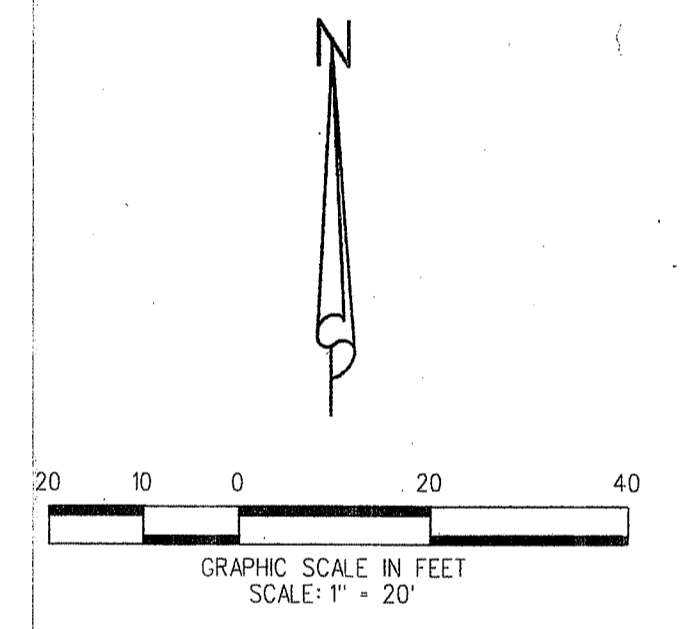
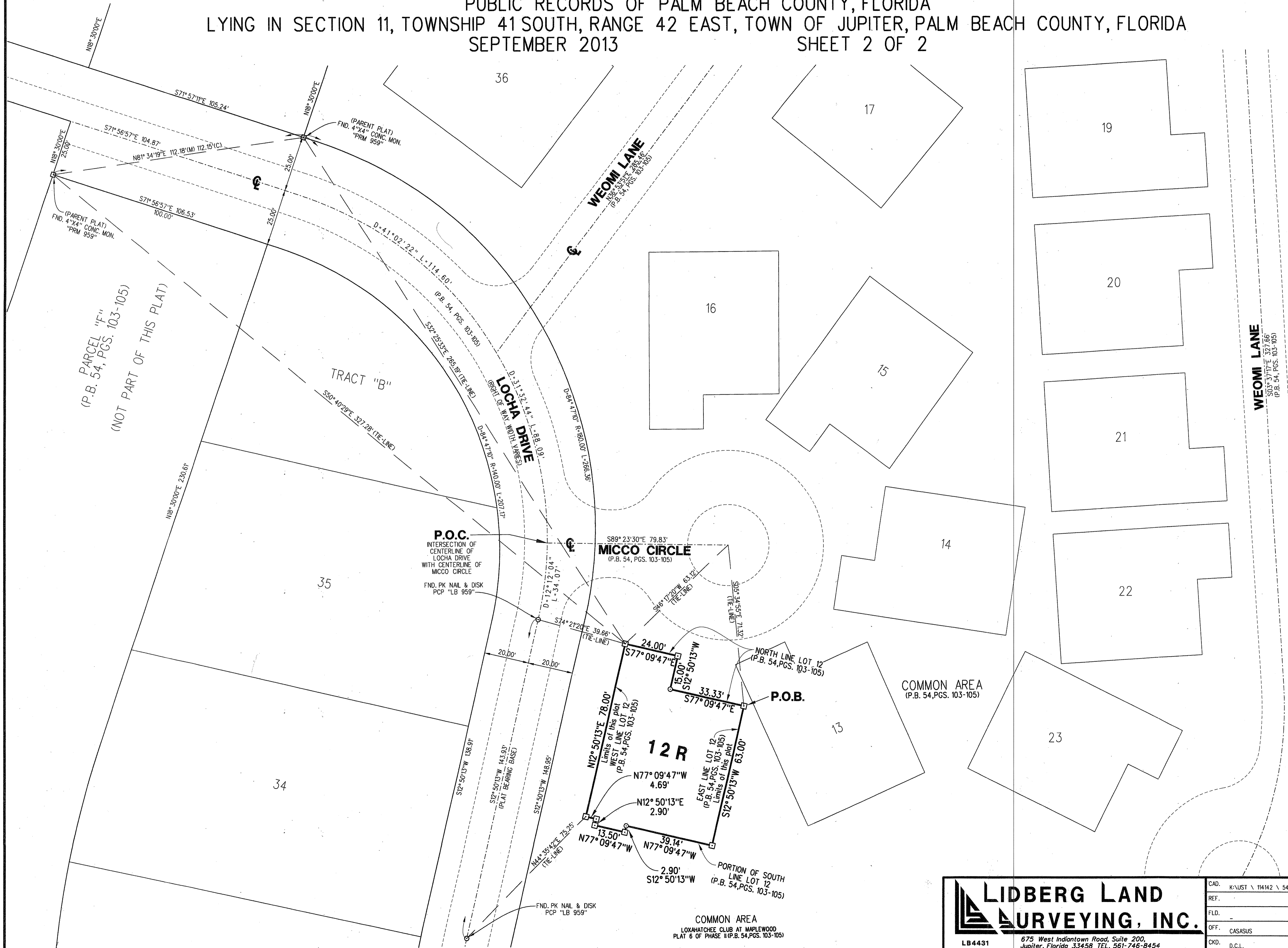


LOXAHATCHEE CLUB AT MAPLEWOOD PLAT NO. 18 OF PHASE II

BEING A REPLAT OF LOT 12, AND A PORTION OF THE COMMON AREA, AS SHOWN ON THE PLAT OF THE LOXAHATCHEE CLUB AT MAPLEWOOD PLAT NO. 6 OF PHASE II, AS RECORDED IN PLAT BOOK 54, PAGES 103 THROUGH 105, PUBLIC RECORDS OF PALM BEACH COUNTY, FLORIDA
 LYING IN SECTION 11, TOWNSHIP 41 SOUTH, RANGE 42 EAST, TOWN OF JUPITER, PALM BEACH COUNTY, FLORIDA
 SEPTEMBER 2013 SHEET 2 OF 2



- ABBREVIATIONS:**
- GB = CHORD BEARING
 - CL = CHORD LENGTH
 - D = DELTA
 - D.E. = DRAINAGE EASEMENT
 - L = ARC LENGTH
 - O.R.B. = OFFICIAL RECORD BOOK
 - N.E. = NORTHEAST
 - N.W. = NORTHWEST
 - P.C.P. = PERMANENT CONTROL POINT
 - P.B. = PLAT BOOK
 - PG. = PAGE
 - P.R.M. = PERMANENT REFERENCE MONUMENT
 - P.S.M. = PROFESSIONAL SURVEYOR AND MAPPER
 - R = RADIUS
 - S.E. = SOUTHEAST
 - S.W. = SOUTHWEST
 - U.E. = UTILITY EASEMENT

- LEGEND:**
- ☐ DENOTES PERMANENT REFERENCE MONUMENT (P.R.M.) SET 4"x4" CONCRETE MONUMENT WITH DISK STAMPED "PRM LB4431" UNLESS OTHERWISE NOTED
 - ⊙ DENOTES PERMANENT REFERENCE MONUMENT (P.R.M.) SET MAG NAIL & DISK STAMPED "PRM LB4431" UNLESS OTHERWISE NOTED
 - Ⓢ DENOTES CENTERLINE OF RIGHT OF WAY

LIDBERG LAND SURVEYING, INC.
 675 West Indiantown Road, Suite 200, Jupiter, Florida 33458 TEL. 561-746-8454

CAD.	K:\JUST \ 114142 \ 54-103 \ 12-030-306 \ 12-030-306.DGN
REF.	
FLD.	
OFF.	CASASUS
CKD.	D.C.L.
FBL.	PG.
JOB.	12-030-306
DATE.	SEPTEMBER 2013
SHEET.	2 OF 2
DWG.	D12-030P